



CLAY ROOF TILE CATALOG 2019



LIFETIME WARRANTY

www.VereaClayTile.com

THE VEREA DIFERENCE

- ✓ **LIFETIME WARRANTY**
We offer a lifetime warranty free of charge.
- ✓ **COLOR PERMANENCE**
Our products are ASTM GRADE 1 and offer unparalleled color permanence and are guaranteed to not discolor or fade over time.
- ✓ **MILDEW RESISTANCE**
Our tile is known to be very mildew resistant due to our superior clay and our state-of-the-art manufacturing process.
- ✓ **INSULATING**
Clay tile is an excellent thermal insulator and is a much cooler system than shingle, slate, concrete roof tile, or metal roofing.
- ✓ **DURABILITY**
Our tile are known to be among the hardest in the industry. Our traverse breaking strength tests results often exceed industry requirements by over 300%.
- ✓ **SUSTAINABILITY**
Our tiles are natural products made of high grade clay and water, which are inert and harmless to the environment.
- ✓ **LOWEST BREAKAGE**
Packaging is one of our core competencies and we are well known to have the lowest breakage in the entire roof tile industry.

For over 100 years, Verea has combined tradition, technology, and environmental stewardship to produce the finest clay roof tile products.

TABLE OF CONTENTS

TILE & COLOR OPTIONS	3
RED	5
BROWN	6
OHIO RED	7
MOCHA	8
GRAPHITE	9
PEACH	10
VINTAGE	11
FUME	12
AÑEJA	13
JACOBIA	14
CAPCANA	15
SANTIAGO	16
FLAT TILE	17
BLENDS	19
ACCESSORIES	21
MANUFACTURING & TECHNICAL	22

SPANISH S ROOF TILE

Our Spanish S offers the look of a cap and pan system in a one piece tile that is easy to install.



RED



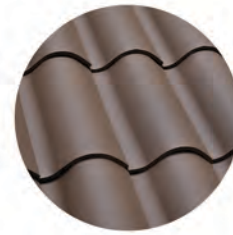
OHIO RED



BROWN



MOCHA

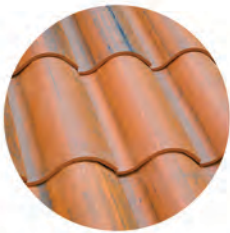


GRAPHITE

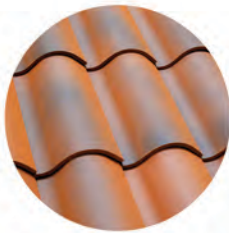


PEACH

INDIVIDUAL COLORS



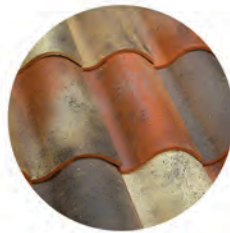
VINTAGE



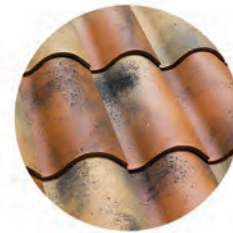
FUME



AÑEJA



JACOBEA



CAPCANA



SANTIAGO

AGED REDS

PRE-BLENDS

BARREL ROOF TILE

Also known as cap and pan or two piece mission. This millenia old profile is the one most often associated with clay tile.



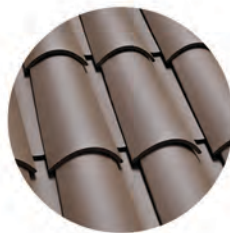
RED



OHIO RED



BROWN



GRAPHITE

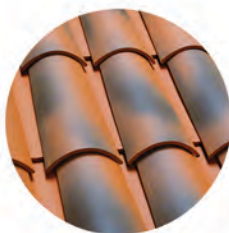


PEACH

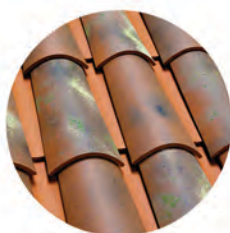
INDIVIDUAL COLORS



VINTAGE



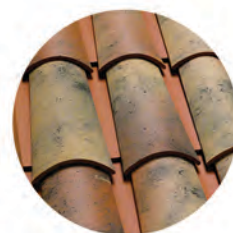
FUME



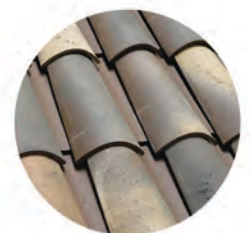
AÑEJA



JACOBEA



CAPCANA



SANTIAGO

AGED REDS

PRE-BLENDS

FLAT ROOF TILE

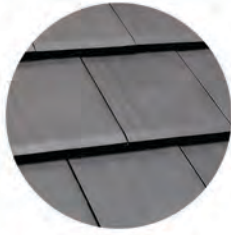
Our interlocking flat tile is a lightweight, Grade 1 roof tile that fits a wide range of architectural styles.



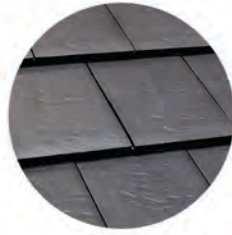
RED



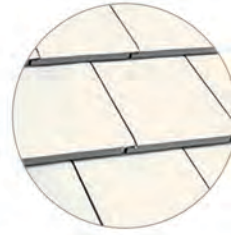
GRAPHITE



SLATE



SLATE TXT



WHITE

INDIVIDUAL COLORS

CARIBBEAN S ROOF TILE

This alternate S profile is generally used for repairs or additions to roofs done with other manufacturer's tile.



RED

TILE SPECIFICATIONS

TILE PROFILE	LENGTH	WIDTH	WEIGHT /UNIT	PIECES /PALLET	SQ. /PALLET	WEIGHT /PALLET	TILES /SQUARE	WEIGHT /SQUARE	MIAMI-DADE NOA	FL APPROVAL #
SPANISH S	19.8 in.	11.3 in.	7.8 lbs.	378	4.3	2,963 lbs.	88 pcs.	686 lbs.	18-0119.02	FL17152-R2
BARREL	19.9 in.	8.3 in.	5.5 lbs.	432	2.8	2,376 lbs.	154 pcs.	847 lbs.	18-0119.03	FL17152-R2
FLAT	15.6 in.	9.9 in.	6.7 lbs.	344	2.8	2,305 lbs.	123 pcs.	824 lbs.	16-0921.07	FL17152-R2
CARIBBEAN S	18.8 in.	11 in.	6.6 lbs.	378	3.9	2,510 lbs.	97 pcs.	640 lbs.	17-0727.07	N/A



LIFETIME WARRANTY

All Verea roof tile come with a LIFETIME WARRANTY. Our products offer unparalleled color permanence and are GUARANTEED to not discolor or fade over time. Enjoy the peace of mind of knowing that your roof will maintain the same appearance for the entirety of it's service life.

RED

Red, or Terracotta is a color synonymous with clay. This is our base color and is a color through product.

Available in:
Spanish S, Barrel (Covers and Pans)



BROWN

Brown is a color through product often used in blends, although it is striking by itself.

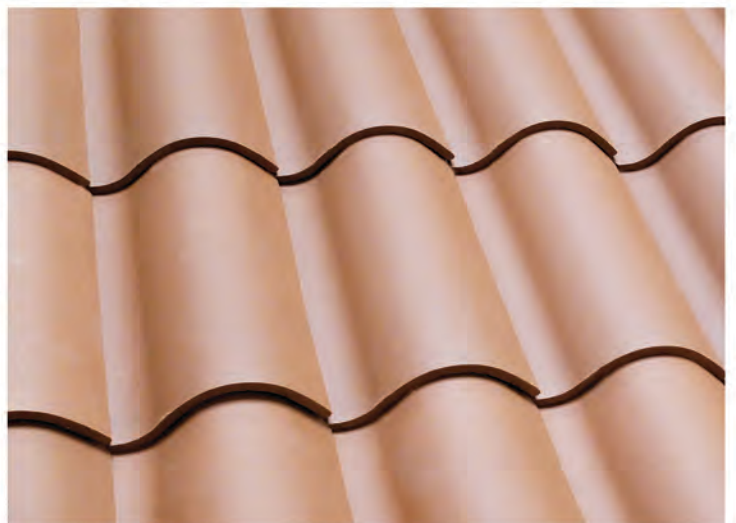
Available in:
Spanish S, Barrel (Covers and Pans)



OHIO RED

Ohio Red, is our newest color through tile. It is less “orange” than our base red and falls in between red and brown.

Available in:
Spanish S, Barrel (Covers and Pans)



MOCHA

Mocha is a coffee like brown sprayed on our base brown tile.

*Available in:
Spanish S*



GRAPHITE

One of our best sellers, this is a color through dark brown.

Available in:
Spanish S, Barrel (Covers and Pans)



PEACH

Sprayed on our base red, this color is often used in high contrast blends.

Available in:
Spanish S, Barrel (Covers and Pans)



VINTAGE

Our most popular aged red. This color shows like a range of reds.

*Available in: Spanish S, Barrel (COVERS ONLY)
Recommended Pans: Red, Ohio Red, Brown*



FUME

An aged red that shows like weathered terracotta.

*Available in: Spanish S, Barrel (COVERS ONLY)
Recommended Pans: Red, Ohio Red*



AÑEJA

This aged red has a texture that mimics lichens giving your roof a decades old look.

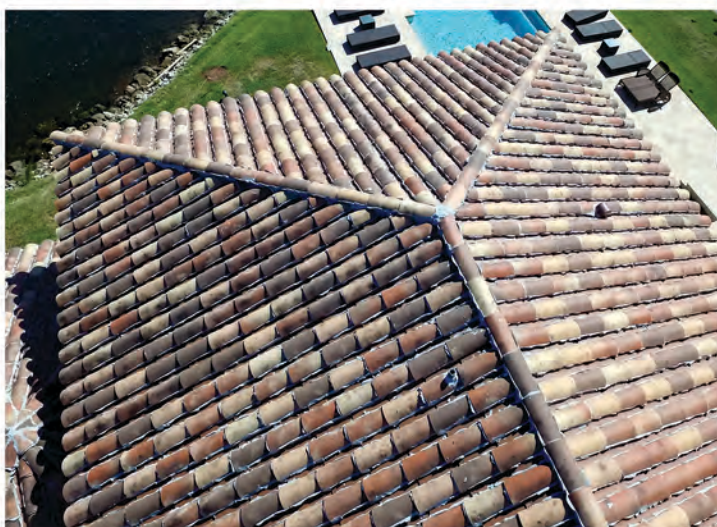
Available in: Spanish S, Barrel (COVERS ONLY)
Recommended Pans: Red, Ohio Red



JACOBEA

Our most popular preblend, Jacobea features aged browns, aged reds, and aged buff.

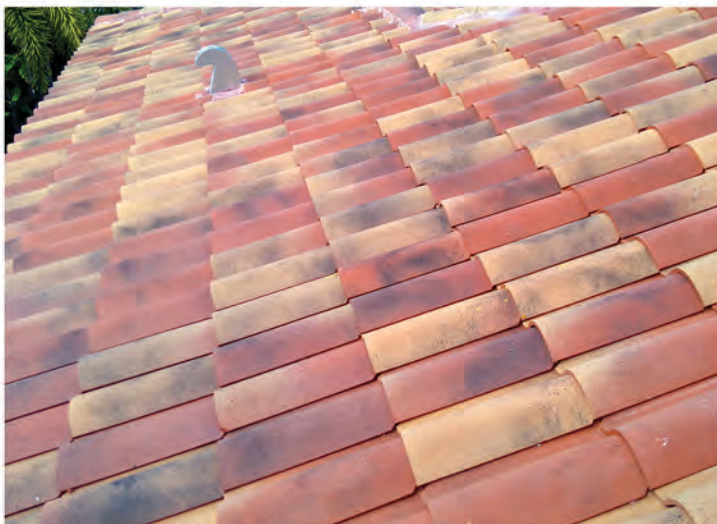
*Available in: Spanish S, Barrel (COVERS ONLY)
Recommended Pans: Red, Ohio Red, Brown*



CAPCANA

This is a Jacobea variant with no brown.

*Available in: Spanish S, Barrel (COVERS ONLY)
Recommended Pans: Red, Ohio Red*



SANTIAGO

This is our darkest preblend and is made to mimic the centuries old roofs seen along the "Camino de Santiago" in Spain.

*Available in: Spanish S, Barrel (COVERS ONLY)
Recommended Pans: Brown, Graphite*



FLAT TILE

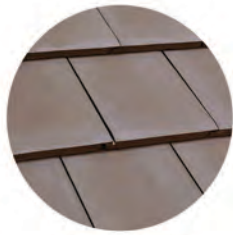
Our interlocking flat tile is a lightweight, Grade 1 roof tile that fits a wide range of architectural styles.

Available in several colors

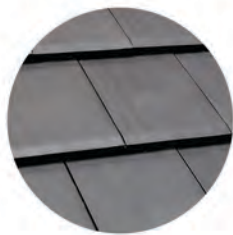




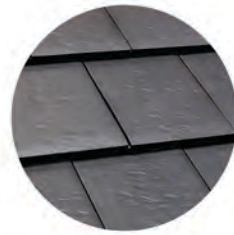
RED



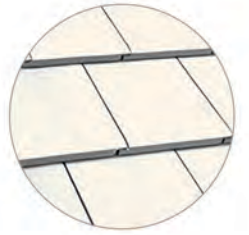
GRAPHITE



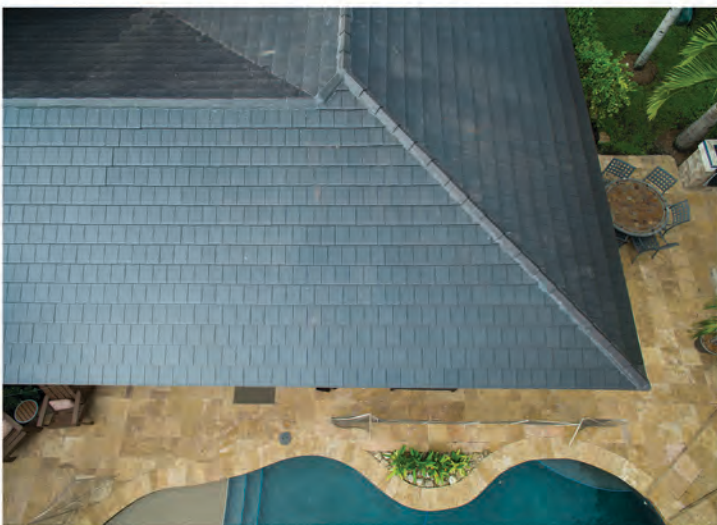
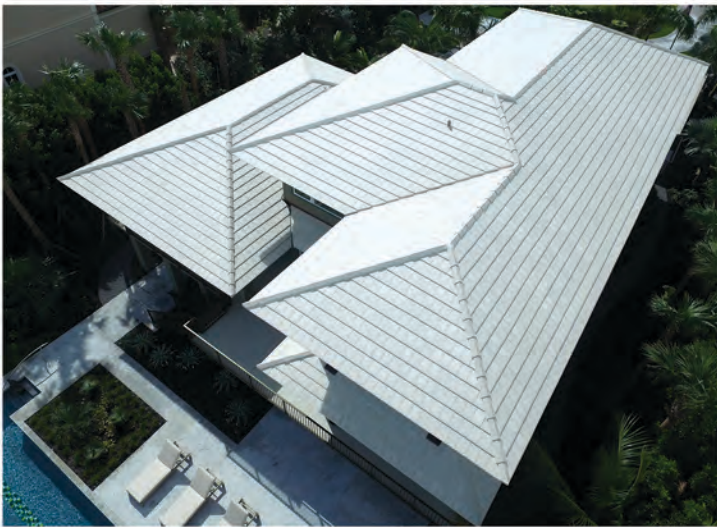
SLATE



SLATE TXT



WHITE



BLENDS



Spanish S

33% Red, 33% Brown, 33% Vintage



Spanish S

33% Graphite, 33% Brown, 33% Vintage



Spanish S & Barrel

33% Red, 33% Brown, 33% Vintage



Spanish S

33% Graphite, 33% Brown, 33% Mocha



Barrel

Covers: 25% Red, 25% Brown, 25% Graphite,
25% Vintage
Pans: 33% Red, 33% Brown, 33% Graphite



Barrel

Covers: 25% Red, 25% Brown, 25% Graphite,
25% Vintage
Pans: 33% Red, 33% Brown, 33% Graphite

With 12 distinct color options and your imagination, almost any color group is attainable.

Available in:
Spanish S, Barrel



Barrel

Covers: 80% Graphite, 20% Fume
Pans: 100% Graphite



Barrel

Covers: 67% Graphite, 33% Brown
Pans: 67% Graphite, 33% Brown



Spanish S

33% Graphite, 33% Brown, 33% Vintage



Spanish S

70% Red, 30% Peach



Barrel

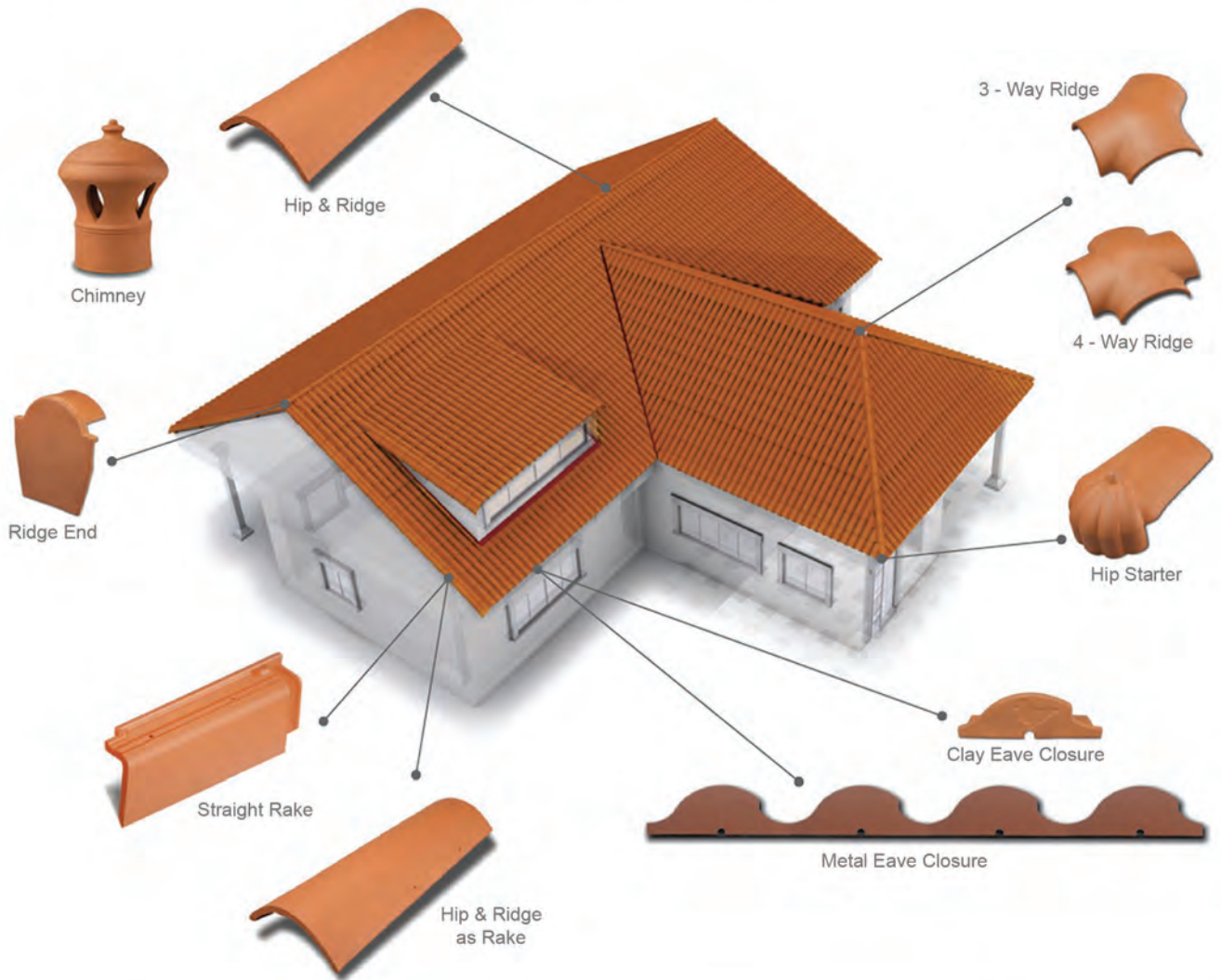
Covers: 25% Red, 25% Brown, 25% Graphite,
25% Vintage
Pans: 33% Red, 33% Brown, 33% Graphite

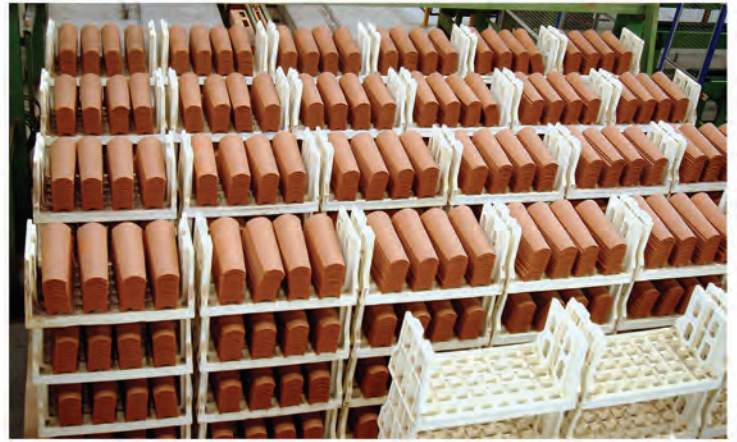


Barrel

Covers: 50% Red, 25% Brown, 25% Fume
Pans: 100% Red

ACCESSORIES





PALLET INFORMATION

Lengths are in inches
Weights are in pounds

TILE PROFILE	PCS PER PALLET	WEIGHT PER UNIT	SQ. PER PALLET	WEIGHT PER PALLET	TILES PER SQUARE	WEIGHT PER SQUARE	PALLET DIMENSIONS
SPANISH S	378	7.9	4.3	2986	88	695	44 X 33 X 45
BARREL TILE	432	5.6	2.8	2419	154	862	44 X 30 X 44
VEREA FLAT	344	6.5	2.8	2236	124	806	45 X 32 X 44
S/BARREL RIDGE	196	6.9	N/A	1352	N/A	N/A	43 X 33 X 25
FLAT RIDGE	143	6.6	N/A	944	N/A	N/A	43 X 29 X 25



TILE PROFILE	MIAMI-DADE NOA	FL APPROVAL #
SPANISH S	18-0119.02	FL17152-R2
BARREL	18-0119.03	FL17152-R2
FLAT	16-0921.07	FL17152-R2
CARIBBEAN S	17-0727.07	N/A

www.VereaClayTile.com

Phone: 786-641-9154
 Email: info@vereaclaytile.com
 Website: www.vereaclaytile.com
 In Europe: www.tejasverea.com

7275 NW 61st Street
 Miami, FL 33166 USA