

Verea

Clay Roof Tile



Gallery



Instagram

www.VereaClayTile.com

THE VERA DIFFERENCE



LIFETIME WARRANTY

We offer a lifetime warranty free of charge.



COLOR PERMANENCE

Our products are ASTM GRADE 1 and offer unparalleled color permanence and are guaranteed to not discolor or fade over time.



MILDEW RESISTANCE

Our tile is known to be very mildew resistant due to our superior clay and our state-of-the-art manufacturing process.



INSULATING

Clay tile is an excellent thermal insulator and is a much cooler system than shingle, slate, concrete roof tile, or metal roofing.



DURABILITY

Our tile are known to be among the hardest in the industry. Our traverse breaking strength tests results often exceed industry requirements by over 300%.



SUSTAINABILITY

Our tiles are natural products made of high grade clay and water, which are inert and harmless to the environment.



LOWEST BREAKAGE

Packaging is one of our core competencies and we are well known to have the lowest breakage in the entire roof tile industry.

Verea Clay Roof Tile combines old-world craftsmanship with twenty-first century technology to bring to market the highest quality and greatest value in roof tile.

TABLE OF CONTENTS

STYLES & COLORS	3
JACOBEA	5
SANTIAGO	6
CAPCANA	7
FLORIDIAN	8
AÑEJA	9
VINTAGE	10
FUME	11
GRAPHITE	12
BROWN	13
MOCHA	14
OHIO RED	15
RED	16
PEACH	17
CARIBBEAN S	18
CUSTOM BLENDS - BARREL	19
CUSTOM BLENDS - SPANISH S	21
FLAT TILE	23
ACCESSORIES	25
FACILITY & SPECIFICATIONS	26



All Verea roof tile come with a lifetime warranty. Our products offer unparalleled color permanence and are guaranteed to not discolor or fade over time.

SPANISH S ROOF TILE

Our Spanish S offers the look of a cap and pan system in a one piece tile that is easy to install.

INDIVIDUAL COLORS



GRAPHITE



BROWN



MOCHA



OHIO RED



RED



PEACH

PRE-BLENDS



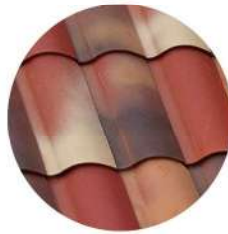
JACOBEA



SANTIAGO



CAPCANA



FLORIDIAN

AGED REDS



AÑEJA



VINTAGE



FUME

CARIBBEAN S ROOF TILE

This alternate S profile is similar to the one piece profiles that were imported from South America for decades. This differs from our standard Spanish S in that it has a flat lap section.

INDIVIDUAL COLORS



RED



FUME



BROWN

For more information on our Caribbean S Roof Tile please visit: www.altusa.com

BARREL ROOF TILE

Also known as cap and pan or two piece mission. This millenia old profile is the one most often associated with clay tile.

INDIVIDUAL COLORS



GRAPHITE



BROWN



MOCHA



OHIO RED



RED



PEACH

PRE-BLENDS



JACOBSEN



SANTIAGO



CAPCANA

AGED REDS



AÑEJA



VINTAGE



FUME

FLAT ROOF TILE

Our interlocking flat tile is a lightweight, Grade 1 roof tile that fits a wide range of architectural styles.

INDIVIDUAL COLORS



RED



GRAPHITE



BROWN TXT



SLATE



SLATE TXT



WHITE

JACOBEA

Our most popular preblend, Jacobea features aged browns, aged reds, and aged buff.

Available in: Spanish S or Barrel (COVERS ONLY)
Recommended Pans: Red, Ohio Red or Brown



SANTIAGO

This is our darkest preblend and is made to mimic the centuries old roofs seen along the “Camino de Santiago” in Spain.

Available in: Spanish S or Barrel (COVERS ONLY)
Recommended Pans: Brown or Graphite



CAPCANA

This is a Jacobea variant with no brown.

Available in: Spanish S or Barrel (COVERS ONLY)
Recommended Pans: Red or Ohio Red



FLORIDIAN

This preblend is a Jacobea variant with greater contrast and no antiquing.

*Available in:
Spanish S*



AÑEJA

This aged red has a texture that mimics lichens giving your roof a decades old look.

Available in: Spanish S or Barrel (COVERS ONLY)
Recommended Pans: Red or Ohio Red



VINTAGE

Our most popular aged red. This color shows like a range of reds.

Available in: Spanish S or Barrel (COVERS ONLY)
Recommended Pans: Red, Ohio Red or Brown



FUME

An aged red that shows like weathered terracotta.

Available in: Spanish S, Barrel (COVERS ONLY)
Recommended Pans: Red or Ohio Red



GRAPHITE

One of our best sellers, this is a color through dark brown.

Available in:
Spanish S or Barrel (Covers and Pans)



BROWN

Brown is a color through product often used in blends, although it is striking by itself.

Available in:
Spanish S or Barrel (Covers and Pans)



MOCHA

Mocha is a coffee like brown sprayed on our base brown tile.

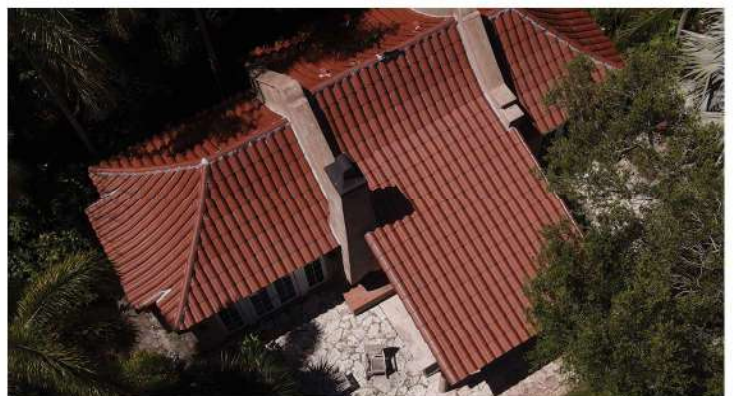
Available in:
Spanish S or Barrel



OHIO RED

Ohio Red, is our newest color through tile. It is less “orange” than our base red and falls in between red and brown.

Available in:
Spanish S or Barrel (Covers and Pans)



RED

Red, or Terracotta is a color synonymous with clay. This is our base color and is a color through product.

Available in:
Spanish S or Barrel (Covers and Pans)



PEACH

Sprayed on our base red, this color is often used in high contrast blends.

Available in:
Spanish S or Barrel (Covers and Pans)



CARIBBEAN S

This is an alternate S profile that is a precise and consistent recreation of tiles imported from Venezuela and Colombia during the 1990's, 2000's, and 2010's

*Available in:
Red or Fume*



CUSTOM BLENDS - BARREL



CAPS: 40% RED, 30% OHIO RED, 30% VINTAGE - PANS: RED



CAPS: 70% VINTAGE, 30% AÑEJA - PANS: 50% RED, 50% BROWN



CAPS: 60% RED, 20% BROWN, 10% FUME, 10% GRAPHITE - PANS: RED



CAPS: 80% GRAPHITE, 20% FUME - PANS: GRAPHITE



CAPS: 33% RED, 33% FUME, 33% AÑEJA - PANS: RED



CAPS: 70% JACOBEEA, 15% CAPCANA, 15% AÑEJA - PANS: RED



CAPS: 25% RED, 25% BROWN, 25% GRAPHITE, 25% VINTAGE
PANS: 33% RED, 33% BROWN, 33% GRAPHITE



CAPS: 33% FUME, 33% BROWN, 33% GRAPHITE
PANS: 33% RED, 33% BROWN, 33% GRAPHITE

With 12 distinct color options and your imagination, almost any color group is attainable. When it comes to custom blended barrel roof tiles, we offer a wide range of hues and finishes to bring your roofing vision to life, ensuring that your home stands out with unique elegance.



CAPS: 50% RED, 25% BROWN, 25% FUME - PANS: RED



CAPS: 67% GRAPHITE, 33% BROWN - PANS: 67% GRAPHITE, 33% BROWN



CAPS: 80% GRAPHITE, 20% FUME - PANS: 100% GRAPHITE



CAPS: 33% RED, 33% FUME, 33% AÑEJA - PANS: RED



CAPS: 50% RED, 25% BROWN, 25% PEACH - PANS: RED



CAPS: 50% RED, 25% BROWN, 25% FUME - PANS: RED



CAPS: 25% RED, 25% BROWN, 25% GRAPHITE, 25% VINTAGE
PANS: 33% RED, 33% BROWN, 33% GRAPHITE



CAPS: 25% RED, 25% BROWN, 25% GRAPHITE, 25% VINTAGE
PANS: 33% RED, 33% BROWN, 33% GRAPHITE

CUSTOM BLENDS - SPANISH S



33% RED, 33% PREACH, 33% GRAPHITE



33% RED, 33% VINTAGE, 33% BROWN



33% RED, 33% PEACH, 33% OHIO RED



80% GRAPHITE, 20% FUME



33% RED, 33% BROWN, 33% VINTAGE



33% GRAPHITE, 33% BROWN, 33% VINTAGE



30% RED, 30% RED, 30% GRAPHITE, 10% PEACH



25% RED, 25% BROWN, 25% GRAPHITE, 25% VINTAGE

With 12 distinct color options and your imagination, almost any color group is attainable. When it comes to custom blended Spanish S roof tiles, we offer a wide range of hues and finishes to bring your roofing vision to life, ensuring that your home stands out with unique elegance.



33% GRAPHITE, 33% BROWN, 33% MOCHA



40% RED, 30% OHIO RED, 15% GRAPHITE, 15% PEACH



33% GRAPHITE, 33% BROWN, 33% VINTAGE



33% RED, 33% BROWN, 33% VINTAGE



33% RED, 33% FUME, 33% MOCHA



33% RED, 33% BROWN, 33% VINTAGE, SPANISH S W/ BARREL TURRET



40% RED, 40% PEACH, 20% GRAPHITE



25% RED, 25% ANEJA, 25% GRAPHITE, 25% VINTAGE

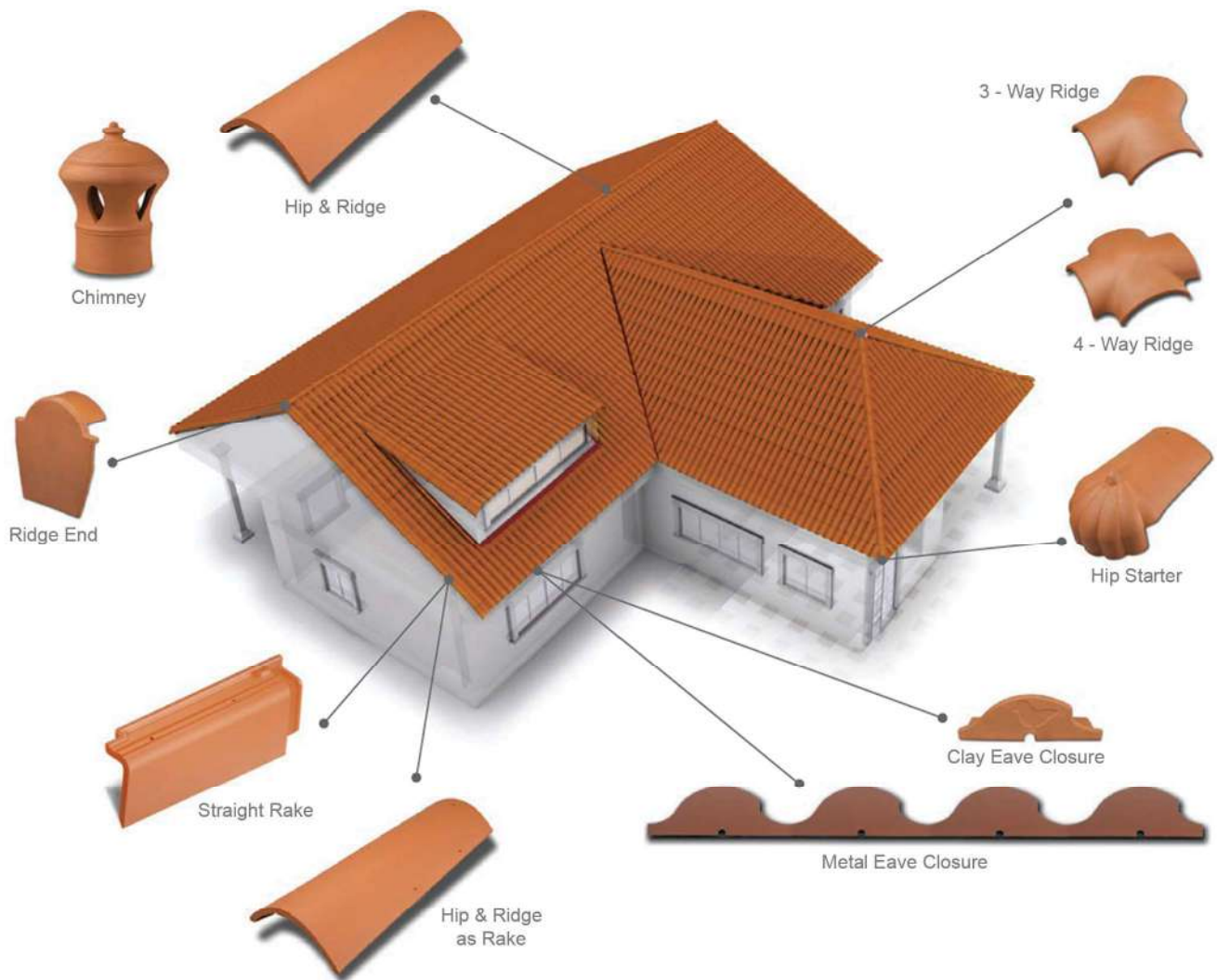
FLAT TILE



Our interlocking flat tile is a lightweight, Grade 1 roof tile that fits a wide range of architectural styles.



ACCESSORIES



PRODUCTION FACILITY



TILE SPECIFICATIONS

TILE PROFILE	LENGTH	WIDTH	WEIGHT /UNIT	PIECES /PALLET	SQ. /PALLET	WEIGHT /PALLET	TILES /SQUARE	WEIGHT /SQUARE	MIAMI-DADE NOA	FL APPROVAL #
SPANISH S	19.5 in.	11 in.	7.8 lbs.	378	4.3	2,963 lbs.	88 pcs.	686 lbs.	22-1202.02	FL17152-R5
BARREL	19.5 in.	8.25 in.	5.6 lbs.	432	2.8	2,435 lbs.	154 pcs.	862 lbs.	22-1202.03	FL17152-R5
FLAT	15.75 in.	10 in.	6.4 lbs.	344	2.8	2,225 lbs.	123 pcs.	794 lbs.	21-0303.01	FL17152-R5
CARIBBEAN S	18.75 in.	10.75 in.	6.5 lbs.	378	3.9	2,472 lbs.	97 pcs.	630 lbs.	22-1202.01	N/A



TILE PROFILE	MIAMI-DADE NOA	FL APPROVAL #
SPANISH S	22-1202.02	FL17152-R5
BARREL	22-1202.03	FL17152-R5
FLAT	21-0303.01	FL17152-R5
CARIBBEAN S	22-1202.01	N/A



Phone: 786-641-9154
 Email: info@vereaclaytile.com
 Website: www.vereaclaytile.com
 In Europe: www.tejasverea.com

7275 NW 61st Street
 Miami, FL 33166 USA

www.VereaClayTile.com